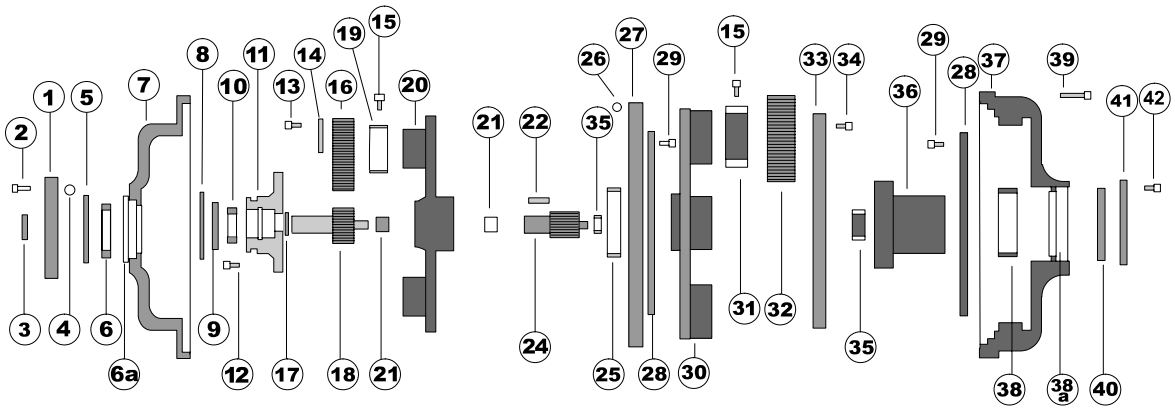


— Bird Decanter PA69 Gearbox Assembly —



#	Description	Part Number
1	Cover	180100
2	SHCS	130100
3	Oil Seal CR-10124	180200
4	O-Ring # 267	130300
5	Retainer 5000-450	180501
6	Bearing SKF-6015	180500
6a	Bearing Insert	180303
7	1st Stage Ring Gear 80:1	180304
7a	1st Stage Ring Gear 140:1	180305
7b	1st Stage Ring Gear 40:1	180306
8	Retainer 5100-300	180600
9	Retainer 5000-244	180800
10	Bearing SKF-6206	180700
11	Bearing Retainer	181201
12	FH SHCS 3/8	131000
13	HH CS (GR-8) 1/4	131400
14	Gear Retainer	131600
15	FH SHCS 5/16	131900
16	1st Stage Planet Gear 80:1	131800
16a	1st Stage Planet Gear 140:1	131801
16b	1st Stage Planet Gear 40:1	131802
17	Retainer 5100-118	181000
18	1st Stage Pinion 80:1	180900
18a	1st Stage Pinion 140:1	180901
18b	1st Stage Pinion 40:1	180902
19	Bronze Bearing	132000
20	1st Stage Cage	132100
20a	1st Stage Journal OEM	181211
21	Bearing J-1212 / IR-812	181900

#	Description	Part Number
22	Key	132300
24	2nd Stage Pinion	181600
24a	2nd stage Pinion OEM	181602
25	Bearing DU	182002
26	O-Ring #460	132500
27	Center Plate	182000
28	Thrust Washer	182100
29	FH SHCS 1/4	182200
30	2nd Stage Cage	182300
30a	2nd Stage Journal OEM	182511
31	Bronze Bearing	132900
32	2nd Stage Planet Gear	133100
33	Gear Retainer / Thrust Plate	183200
34	SHCS 1/4	183201
35	Bearing B-2812 / IR-242816	180701
36	Spline, Female	183500
36a	Spline, Large Male	183501
36b	Spline, Small Male	183502
37	2nd Stage Ring Gear, Female	183600
37a	2nd Stage Ring Gear, Male	183601
38	Bearing DU	182803
38a	Bearing Insert	182804
39	SHCS 3/8	133900
40	Oil Seal, Female	133800
40a	Oil Seal, Male Garlock	133801
41	Seal Retainer, Female	134001
41a	Seal Retainer, Male	134000
42	FH SHCS 1/4	134100

