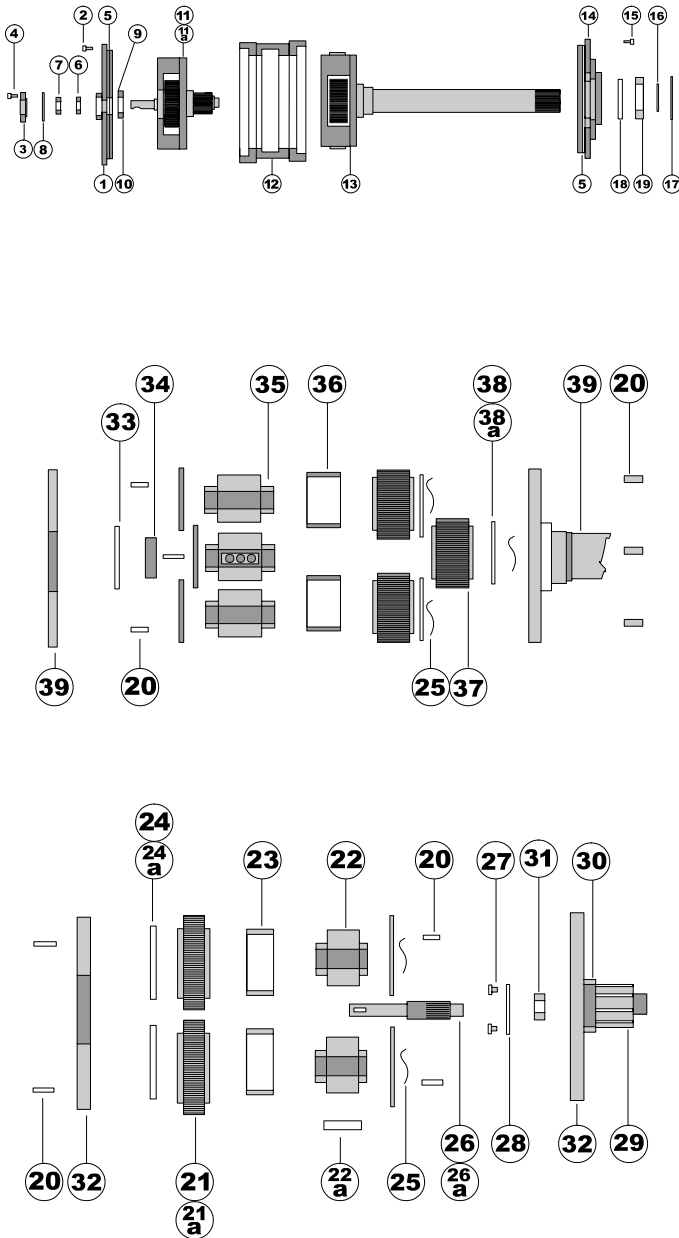


— Sharples Decanter P125 Gearbox Assembly —



#	Description	Part Number
1	Cover	110100
2	SHCS 1/4" – 20 x 1	110101
3	Retainer	110102
4	SHCS 10 – 24 x 3/4"	110103
5	O-Ring	110200
6	Bearing SKF 6203	110300
7	Oil Seal JM – 4880	110400
8	Gasket Opt.	110500
9	Shim Set	110600
10	Bearing ND – 3L07	110700
11	1st. Stage Assy. P-52	110800
11a	1st. Stage Assy. P-125	110801
12	Case & Ring Gears	110900
13	2nd Stage Assy.	111000
14	Cover	111200
15	SHCS 5/16 – 18 x 1	111201
16	Retaining Ring 5100-237	111202
17	Retaining Ring 5000-375	111203
18	Oil Seal JM3631 PD	111300
19	Bearing ND 3L12	111400
20	Roll Pin 1/8 x 9/16	111600
21	P-52 Planet Gear	111700
21a	P-125 Planet Gear	111701
22	Axle	111800
22a	Support	112206
23	BZ. Bearing	111801
24	Thrust Washer 1st Stage	111900
24a	Thrust Washer 1st Stage	111901
25	Spring Washer	112000
26	P-52 Pinion	112100
26a	P-125 Pinion	112101
27	F.H. Screws 8 – 32 x 3/8	112201
28	Retainer	112202
29	2nd Stage Pinion	112300
30	Roll Pins 1/4 x 3/4	112400
31	Bearing SKF 6200	112500
32	1st Stage Cage 2 pcs.	112205
33	Retaining Ring 5000-185	112700
34	Bearing SKF 6204	112800
35	Axle	112900
36	BZ Bearing	112901
37	2nd Stage Gears	113000
38	Thrust Washer 2nd Stage	113100
38a	Thrust Washer 2nd Stage	113101
39	2nd Stage Cage 2 pcs.	112605

