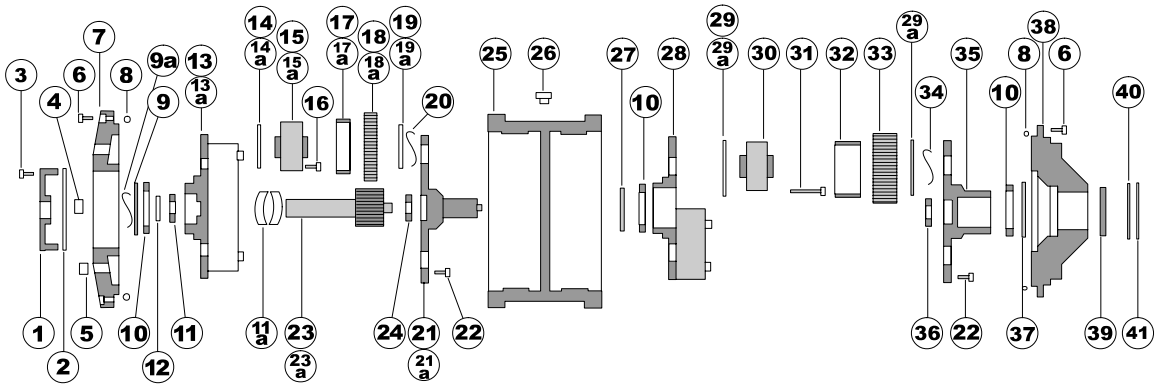


— Sharples Decanter P1 80 Gearbox Assembly —



#	Description	Part Number
1	Front Cap.....	150100
2	Gasket.....	150200
3	SHCS 5/16 – 18 x 7/8.....	150300
4	Oil Seal Nat'l #470625.....	150400
5	Oil Plug.....	150500
6	SHCS 1/2 – NC x 1-1/4.....	150600
7	Outside Cover.....	150700
8	O-Ring #462.....	150800
9	Wavy Spring Spacer.....	150903
9a	Wavy Spring Retainer.....	150902
10	Bearing XLJ 5EJ.....	151000
11	Bearing #308.....	151100
11a	Disc Spring.....	151101
12	Retainer RR – 354.....	151200
13	1st Stage Housing P-95.....	151300
13a	1st Stage Housing P-47.5.....	151301
14	Outside Thrust Washer P-95.....	151400
14a	Outside Thrust Washer P-47.5.....	151401
15	Axle P-95.....	151500
15a	Axle P-47.5.....	151501
16	SHCS 1/2 NC x 2-1/2.....	151600
17	Bronze Bearing P-95.....	151700
17a	Bronze Bearing P-47.5.....	151701
18	1st Stage Planet Gear P-95.....	151800
18a	1st Stage Planet Gear P-47.5.....	151801
19	Inside Thrust Washer P-95.....	151900

#	Description	Part Number
19a	Inside Thrust Washer P-47.5.....	151901
20	Wavy Washer.....	152000
21	1st Stage Cover P-95.....	152100
21a	1st Stage Cover P-47.5.....	152101
22	SHCS 1/2 NC x 1-1/2.....	152200
23	1st Stage Pinion P-95.....	152300
23a	1st Stage Pinion P-47.5.....	152301
24	Bearing #304.....	152400
25	Case with Ring Gears.....	152500
26	Oil Plug.....	152600
27	Retainer RS-500.....	152700
28	2nd Stage Housing.....	152800
29	Outside Thrust Washer.....	152900
29a	Inside Thrust Washer.....	152901
30	Axle, 2nd Stage.....	153000
31	SHCS 1/2 NC x 4.....	153100
32	Bronze Bearing.....	153200
33	2nd Stage Planet Gear.....	153300
34	Wavy Washer.....	153400
35	2nd Stage Cover with Spline.....	153500
36	Bearing SKF #6308.....	153600
37	Spacer.....	153700
38	Inside Cover.....	153800
39	Oil Seal Nat'l #415725.....	153900
40	Stabilizing Ring.....	154000
41	Retainer.....	154100

