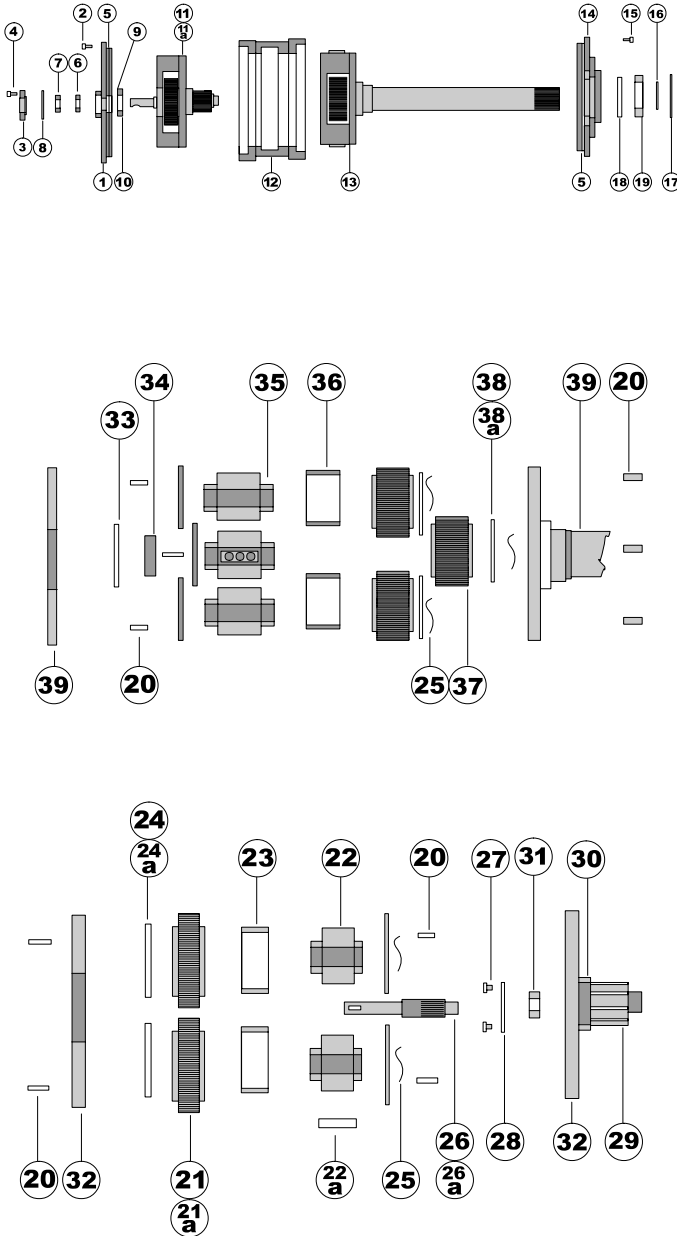


# — Sharples Decanter P52 Gearbox Assembly —



#	Description	Part Number
1	Cover .....	110100
2	SHCS 1/4" – 20 x 1 .....	110101
3	Retainer .....	110102
4	SHCS 10 – 24 x 3/4" .....	110103
5	O-Ring .....	110200
6	Bearing SKF 6203 .....	110300
7	Oil Seal JM – 4880 .....	110400
8	Gasket Opt. ....	110500
9	Shim Set .....	110600
10	Bearing ND – 3L07 .....	110700
11	1st. Stage Assy. P-52 .....	110800
11a	1st. Stage Assy. P-125 .....	110801
12	Case & Ring Gears .....	110900
13	2nd Stage Assy. ....	111000
14	Cover .....	111200
15	SHCS 5/16 – 18 x 1 .....	111201
16	Retaining Ring 5100-237 .....	111202
17	Retaining Ring 5000-375 .....	111203
18	Oil Seal JM3631 PD .....	111300
19	Bearing ND 3L12 .....	111400
20	Roll Pin 1/8 x 9/16 .....	111600
21	P-52 Planet Gear .....	111700
21a	P-125 Planet Gear .....	111701
22	Axle .....	111800
22a	Support .....	112206
23	BZ. Bearing .....	111801
24	Thrust Washer 1st Stage .....	111900
24a	Thrust Washer 1st Stage .....	111901
25	Spring Washer .....	112000
26	P-52 Pinion .....	112100
26a	P-125 Pinion .....	112101
27	F.H. Screws 8-32 x 3/8 .....	112201
28	Retainer .....	112202
29	2nd Stage Pinion .....	112300
30	Roll Pins 1/4 x 3/4 .....	112400
31	Bearing SKF 6200 .....	112500
32	1st Stage Cage 2 pcs. ....	112205
33	Retaining Ring 5000-185 .....	112700
34	Bearing SKF 6204 .....	112800
35	Axle .....	112900
36	BZ Bearing .....	112901
37	2nd Stage Gears .....	113000
38	Thrust Washer 2nd Stage .....	113100
38a	Thrust Washer 2nd Stage .....	113101
39	2nd Stage Cage 2 pcs. ....	112605

